



ASPIRE OSHC

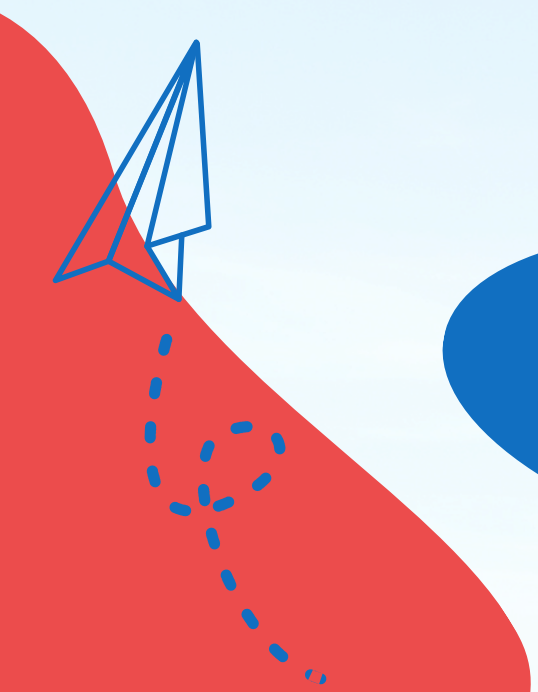


VACATION CARE PROGRAM ASPIRE GOULBURN WEST

SEPTEMBER / OCTOBER 2025



BOOK NOW



VACATION CARE PROGRAM

Goulburn West

SERVICE MANAGER: Cloey Bradley-Cooper/Karla Thomas
PHONE: 0439 770 937
EMAIL: goulburnwest@aspire-oshc.com.au

Monday
29/09/2025

PCYC Internal Excursion



Get ready for a day full of movement and fun! PCYC is visiting for a gymnastics incursion where kids will jump, roll and balance through exciting activities.

- Location: GWPS
- Vacancies: 30
- Activity start: 10am
- Activity end: 12pm

\$95

Tuesday
30/09/2025

Arboretum Excursion



BOOK YOUR SEAT!!
POD Playground offers fun for all ages with giant acorn cubbies, nest swings, music play, and more. Kids can climb, explore, and enjoy stunning views in this award winning spaces.

- Location: Canberra
- Vacancies: 20
- Leaving centre: 9:45am
- Return to centre: 2:00-2:30pm

\$105

Wednesday
01/10/2025

Cook Off Centre Day



Get ready to stir, mix and create in our fun Cook Off Challenge! Young chefs will team up to make tasty dishes with surprise ingredients, judged on flavour, presentation and fun.

- Location: GWPS
- Vacancies: 30
- Activity start: 10am
- Activity end: 3pm

\$85

Thursday
02/10/2025

Questacon Excursion



Step into a world of wonder at Questacon! With hands on exhibits, mind blowing science shows and interactive fun, it's the perfect place for curious kids to explore, play and discover.

- Location: Canberra
- Vacancies: 20
- Leaving centre: 9:45am
- Return to centre: 2pm

\$105

Friday
03/10/2025

Bungee Run Internal Excursion



Get ready for fast paced fun with our Bungee Run Incursion by Jim's Castles! Kids will race against a bungee cord, testing their strength and balance in a safe, inflatable arena full of laughs and friendly competition.

- Location: GWPS
- Vacancies: 30
- Activity start: 10am
- Activity end: 5pm

\$95



VACATION CARE PROGRAM

Goulburn West

SERVICE MANAGER: Cloey Bradley-Cooper/Karla Thomas
PHONE: 0439 770 937
EMAIL: goulburnwest@aspire-oshc.com.au

Monday
06/10/2025

Public Holiday



Service Closed

Tuesday
07/10/2025

Flip Out Excursion



Jump into fun at Flip Out Mittagong! Kids will bounce, flip and tumble through trampolines, foam pits and obstacle courses in a safe, supervised space the perfect way to burn energy and have a blast with friends.

- Location: Mittagong
- Vacancies: 20
- Leaving centre: 9:15am
- Return to centre: 2:00pm

\$105

Wednesday
08/10/2025

Science n Sports Centre Day



Get ready for a fun filled day of science and sports! Kids will enjoy hands on experiments and exciting sports challenges that promote teamwork, curiosity, and movement.

- Location: GWPS
- Vacancies: 30
- Activity start: 10am
- Activity end: 2:30pm

\$85

Thursday
09/10/2025

Bowling Excursion



Lace up your shoes for a fun day at Mittagong Ten Pin Bowling! Kids will enjoy friendly competition, teamwork, and laughter while building confidence and coordination with friends.

- Location: Mittagong-Ten Pin Bowling
- Vacancies: 20
- Leaving centre: 9:15am
- Return to centre: 2:00pm

\$105

Friday
10/10/2025

Paint N Sip Internal Excursion



Unleash your creativity in our Paint and Sip session led by Heidi from HeartyMaven! Kids will paint their own canvas masterpiece while sipping on tasty kid-friendly drinks.

- Location: GWPS
- Vacancies: 20
- Activity start: 1pm
- Activity end: 2:30pm

\$95

VACATION CARE PROGRAM

Goulburn West

SERVICE MANAGER: Cloey Bradley-Cooper/Karla Thomas
PHONE: 0439 770 937
EMAIL: goulburnwest@aspire-oshc.com.au

Monday
13/10/2025

Pjs & Crazy Hair Day Centre Day



It's the last day of the
holidays.

Wear your favourite pjs, and
join us as we create/color the
best crazy hair.

- Location: GWPS
- Vacancies: 30
- Activity Begins: 10am
- Activity Ends: 2:00pm

\$85

Tuesday
14/10/2025

Back to School



Wednesday
15/10/2025

Back to School



Thursday
16/10/2025

Back to School



Friday
17/10/2025

Back to School



IMPORTANT DAILY INFORMATION

WHAT TO BRING EACH DAY



Hat



Morning Tea & Lunch



Water Bottle



Backpack



Enclosed Shoes



Sun Safe Clothing

WHAT WE PROVIDE EACH DAY



Breakfast



Afternoon Tea



Late Snack

DAILY STAFFING RATIOS

All ratios adhere to National Laws & Regulations. Daily ratios will be based off the activity and can range anywhere from 1:5 - 1:15.

VACATION CARE IMPORTANT FAMILY INFORMATION

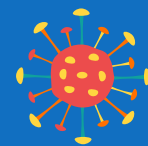


Join our fun filled ASPIRE OSHC Vacation Care program. To make a booking for Vacation Care please 'make a booking' through the [OWNA parent portal](#).



NO HAT NO PLAY

As a sun safe measure ASPIRE OSHC requires all children and staff to wear a Cancer Council approved hat during high UV periods. In addition, and as required by the Cancer Council and WHS legislation we monitor the UV Index daily to ensure we take all reasonable precautions to protect children and staff from over exposure to the sun.



ALLERGY AWARENESS

On enrolment, you are required to advise staff if your child has an allergy and identify the allergy on the enrolment form. To ensure we are able to take best care of your child we ask that you also provide information as to the triggers and symptoms of your child's allergy. All efforts will be made by staff to avoid such triggers. All ASPIRE OSHC services are "Nut Free" environments. Children are not allowed to bring nuts of any type into our services. The sharing of food is also not allowed.



ARRIVALS AND DEPARTURES

You are required to sign your children in and out of the service each day recording arrival and departure time. For safety purposes, it is important that staff are informed of your child's arrival and departure daily.



APPROPRIATE CLOTHING

As a sun safe measure ASPIRE OSHC requires all children and staff to wear a Cancer Council approved hat during high UV periods. In addition, and as required by the Cancer Council and WHS legislation we monitor the UV Index daily to ensure we take all reasonable precautions to protect children and staff from over exposure to the sun.



ANAPHYLAXIS

If your child has a diagnosed allergy, before your child can attend the service you must provide a completed coloured allergy action plan including a coloured photo and labelled medication. All medication should be handed directly to staff on arrival. All medications must be on the premises at all times when your child is present. The action plans are to be updated as required (at least yearly) and staff notified of any changes to the action plan (refer to the anaphylaxis policy and procedure).



MEDICATION

Before we can administer a prescribed medication to your child, we require you to complete a medication authority form. All sections of the medication form need to be completed. Medication can only be administered if the medication is in its original packaging and labelled with the child's name, a current date and the name of the medication and dosage required. (refer to medication policy) Children returning from an illness will require a Doctor's clearance certificate stating they are no longer infectious and are fit to attend care.



SUNSCREEN

Sunscreen is available at the service, we ask that you apply the sunscreen to your child upon arrival. Staff will supervise re-application during the day. If your child is sensitive or has an allergy to the sunscreen we use, please supply an appropriate sunscreen for your child.



ASTHMA

If your child has been diagnosed with Asthma, you must provide a current Asthma action /management plan, which needs to have been completed by your treating GP. In addition we require a long term medication form (refer to the asthma policy and procedure).



PERSONAL BELONGINGS

We recognise that some children may like to bring cherished toys and equipment from home for use during the vacation care program. ASPIRE OSHC cannot take responsibility for lost or damaged items - this includes technology! Tech use can only take place in a designated space at a designated time. These rules will be explained to the children every day before the start of the daily program.